

**INVESTVALUE
INDIA WINNERS PORTFOLIO**

A Multi-Cap Portfolio Management Strategy



About Us

InvestValue Capital Private Limited (“IV Capital”) is registered as a Portfolio Manager with the Securities and Exchange Board of India (SEBI) under the SEBI (Portfolio Managers) Regulations, 2020, vide SEBI Registration No.: INP000009773, dated 12 January 2026.

InvestValue Capital Private Limited will provide discretionary Portfolio Management Services (PMS) to high-net-worth individuals and sophisticated investors.

The firm focuses on long-term wealth creation through disciplined, research-driven equity strategies in listed Indian companies.

Our investment approach combines:



Fundamental
Business Analysis



Governance And Capital
Allocation Assessment



Earnings Visibility
Evaluation



Risk-Managed
Portfolio Construction

We aim to build concentrated yet diversified portfolios of high-quality businesses capable of compounding value across market cycles.

Registration granted by SEBI does not in any way guarantee the performance of the Portfolio Manager or provide any assurance of returns to investors.



Why This Strategy

The coming decade is widely expected to be one of India's most transformative growth phases.

India is now the world's fastest-growing major economy, supported by strong domestic consumption, rising formalisation, infrastructure expansion, manufacturing incentives, and a growing middle class. Over the past 10 years, India's nominal GDP has more than doubled, and equity markets have delivered long-term wealth creation despite multiple global shocks.

At the same time, market participation has widened significantly. India now has over 20 crore demat accounts, daily trading volumes are at record highs, and information flows are faster than ever. While this has improved access to markets, it has also increased noise, speculation, and short-termism.

In such an environment, simply "being invested" is no longer enough. What matters is how capital is deployed, where it is allocated, and which businesses are owned through market cycles.

The InvestValue India Winners Portfolio was created to provide investors with a structured, research-driven way to participate in India's long-term growth story, without chasing short-term trends or reacting to market headlines.

By focusing on business quality, earnings durability, and disciplined portfolio construction, the strategy aims to help investors stay invested through cycles and benefit from India's structural growth over the coming decade.



Core Positioning

InvestValue India Winners Portfolio is a high-conviction, research-led multi-cap equity strategy designed to capture India's long-term structural growth while consciously managing downside risks across market cycles.

The strategy blends disciplined fundamental research, deep management assessment, and valuation prudence to build a portfolio of businesses with longevity of earnings rather than short-lived growth spurts.



Strategy Type

Multi-Cap | Long-Only
Discretionary PMS



Investment Horizon

Medium to Long Term
(3-5 years+)



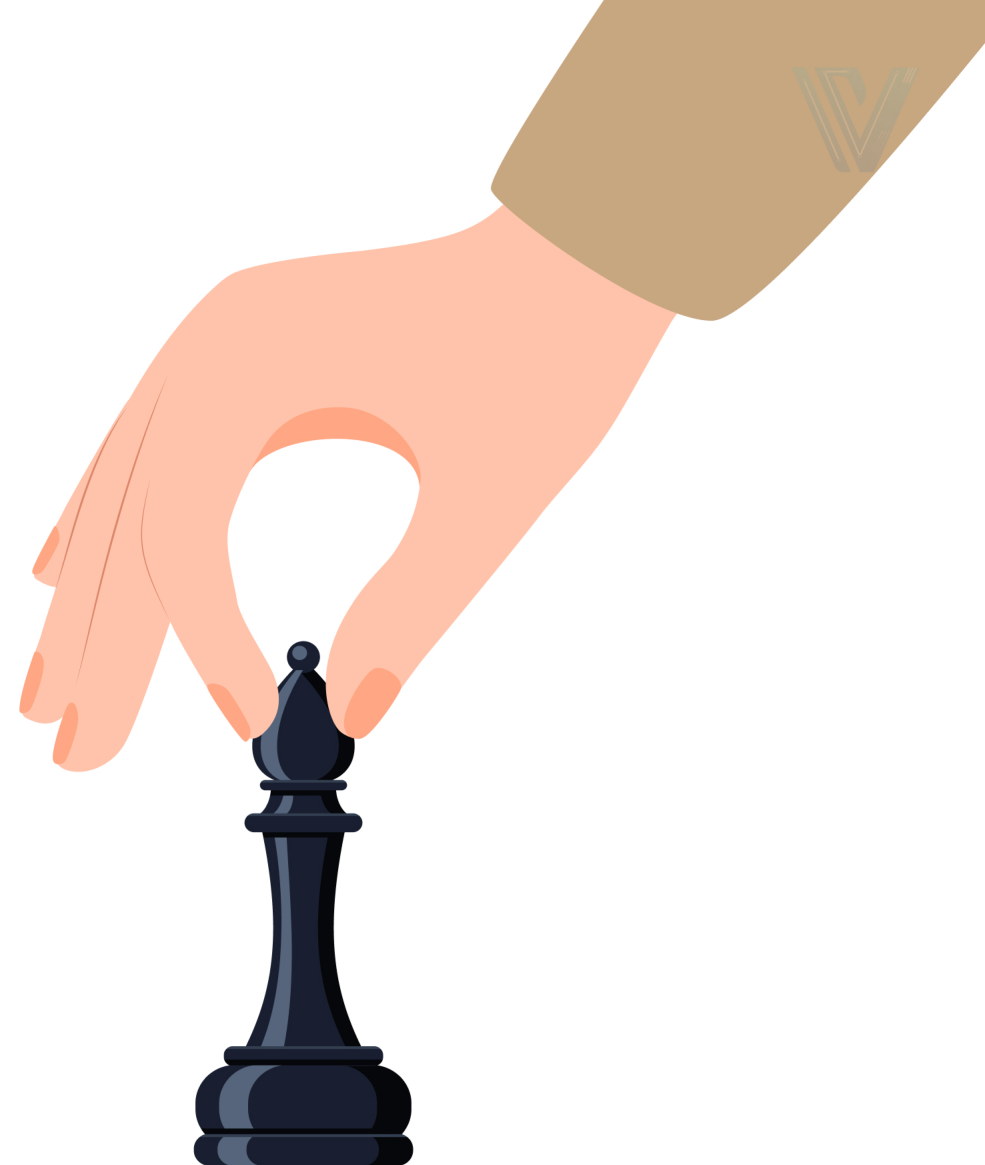
Risk Profile

High



Benchmark

BSE 500 TRI





Investment Objective

The objective of the InvestValue India Winners Portfolio is to build long-term wealth by investing in high-quality Indian companies with sustainable growth, strong fundamentals, and sound governance.

The portfolio focuses on businesses that can:

- ✓ Compound Earnings Consistently
- ✓ Allocate Capital Efficiently
- ✓ Withstand Economic Cycles
- ✓ Create Durable Shareholder Value

We selectively participate in turnaround opportunities and special situations where there is clear visibility of fundamental improvement

Our goal is to generate alpha over a full market cycle through disciplined stock selection and structured portfolio construction – not short-term market timing.



What This Really Means

We are not chasing the next quarter's numbers.

We focus on businesses that can compound value steadily, survive disruptions, and allocate capital sensibly through cycles.



Investment Philosophy

India has over 2,000 listed companies. In our view, fewer than 500 are truly investable over the long term.

In an era of abundant information, AI-driven data flow, and rising noise, sustainable investing is less about access to information and more about asking the right questions.

Our Philosophy Rests On Three Core Beliefs:

- Growth Matters, But **Longevity Of Growth** Matters More
- Reported Profits Are Opinions; **Cash Flows Are Facts**
- Capital Allocation Decisions Define **Long-Term Outcomes**

Short-term excitement through aggressive diversification or unrelated expansion may impress markets temporarily but often destroys long-term shareholder value.





Classification of Listed Equity Opportunities

Cyclical Growth

(PAT >15%, ROE <15%)

Sectors:

Capital Goods, Infrastructure, Metals, Logistics, Select Banking & Energy

High growth but sensitive to economic cycles. Timing of entry and exit is critical.



Defensive Growth

(PAT <15%, ROE >15%)

Sectors:

Consumer Staples, Healthcare, IT Services, Media

Stable cash flows with lower growth volatility.



Value Traps

(PAT <15%, ROE <15%)

Sectors:

PSU Banks, Utilities, Telecom, Certain Upstream Energy

Low growth with weak capital efficiency. Avoided unless clear turnaround visibility exists.



Secular Growth

(PAT >15%, ROE >15%)

Sectors:

Consumer Discretionary, Auto & Ancillaries, Private Banks, NBFCs, Insurance, Retail

Consistent high growth with strong capital efficiency across cycles.





Research & Stock Selection Process

Internal Analysis



Financial Statement
Analysis



Business & Sector
Checklists



Corporate
Governance
Assessment



Stock Pitch
Discussions



Investment
Committee Reviews

External Analysis



Analyst & Industry
Conferences



Company Investor
Presentations



Management
Interactions



Channel Checks
& Site Visits



Expert And Peer
Interactions

“Only stocks that pass both qualitative and quantitative scrutiny enter the portfolio.”



VECTOR – Our Investment Framework

A disciplined, research-first framework that ensures consistency and conviction.

V

Value & Quality Filters

- Clean Balance Sheets
- Strong ROE/ROCE
- Transparent Governance

E

Earnings Momentum & Visibility

- Consistent Growth
- Margin Trends
- Demand Visibility

C

Chart Structure & Price Leadership

- Healthy Trends
- Strong Technical Structure
- Volume Confirmation

T

Trend Strength & Market Confirmation

- Relative Strength
- Volatility Behaviour
- Institutional Flows

O

Optimized Position Sizing

- Risk-Aligned Exposure Based On Conviction And Liquidity.

R

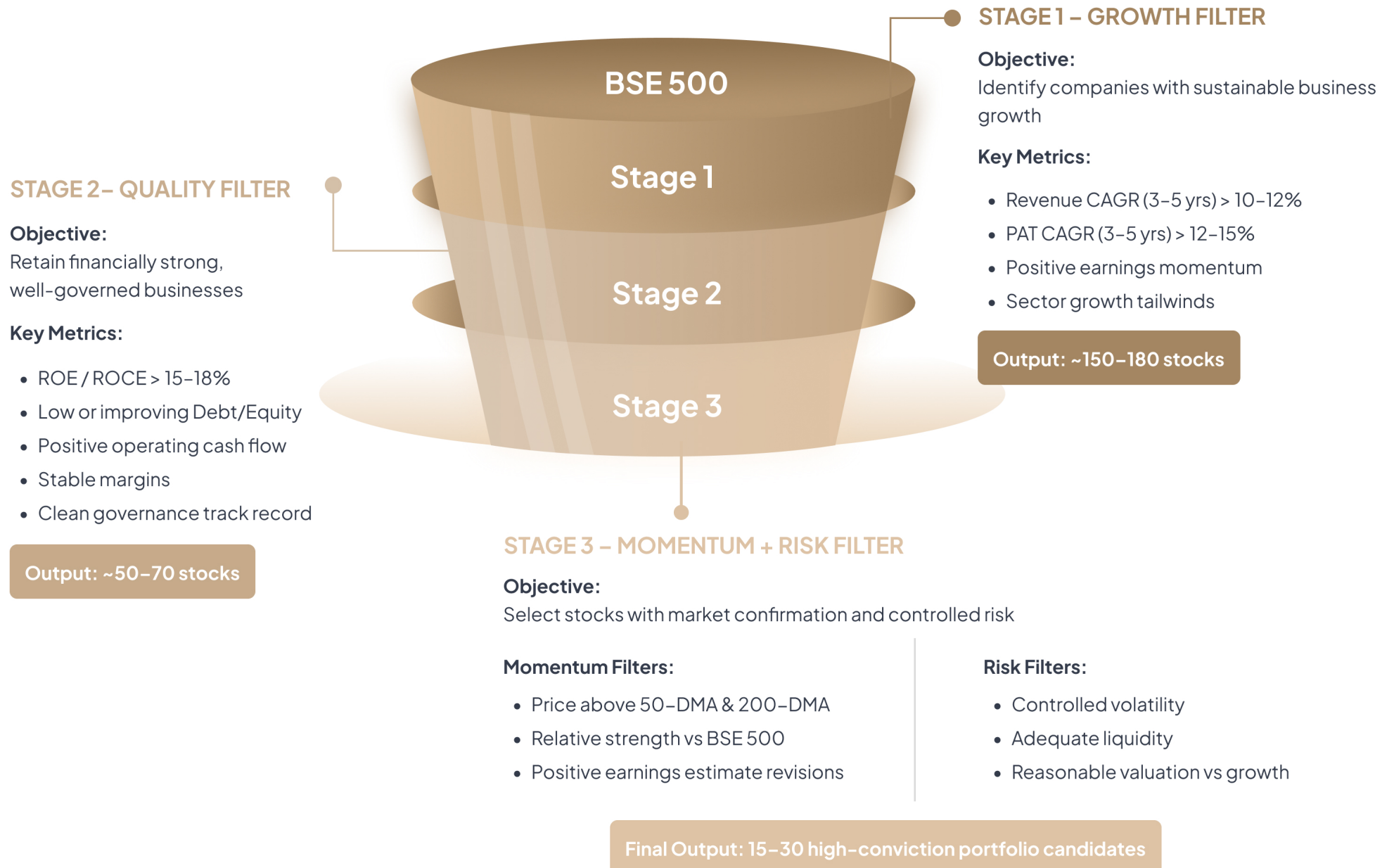
Review, Rebalance & Risk Control

- Structured Reviews
- Defined Exits
- Disciplined Rebalancing

VECTOR



Stock Selection Funnel





Portfolio Construction



The portfolio remains benchmark-aware but not benchmark-driven.



Risk Management Philosophy

Risk is defined as **permanent capital impairment**, not short-term price movement.

Our Philosophy Rests On Four Core Beliefs:

- Avoiding Large Drawdowns
- Continuous Fundamental Monitoring
- Governance & Capital Allocation Discipline
- Liquidity And Downside Protection

Ideal Investor Profile

Suitable For Investors Who:

- Have A Medium To Long-Term Horizon
- Understand Equity Market Volatility
- Seek Consistent Compounding
- Prefer Active, Conviction-Led Management

Risk Type	Control Mechanism
Business Risk	Fundamental Screening
Valuation Risk	Growth-Adjusted Pricing
Liquidity Risk	Volume & Exit Filters
Concentration Risk	Position Limits
Drawdown Risk	Review Triggers
Governance Risk	Compliance Framework Triggers

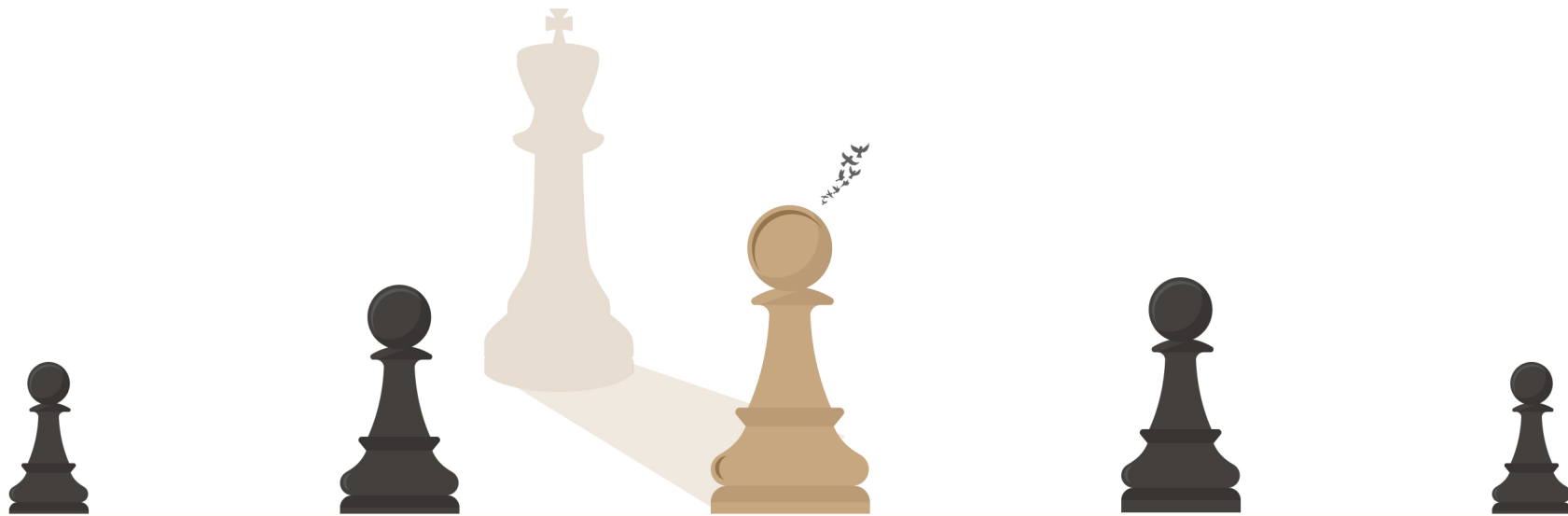
“If we avoid the losers, the winners will take care of themselves.”

-Howard Marks



What Differentiates InvestValue India Winners

- Willingness to be non-consensus when facts justify it
- Acceptance that great companies aren't great stocks at any price
- Avoiding momentum chasing; understanding what drives momentum
- Deep research over surface-level information



To find pearls, one must dive deep into the ocean — not search in fountains.



About InvestValue Fintech Pvt. Ltd.

InvestValue Fintech Private Limited is a technology-driven wealth and financial distribution platform built to simplify how investment products are discovered, evaluated, and distributed across India's wealth ecosystem.

The company operates India's first multi-issuer digital wealth product marketplace, NeoFinDesk, which connects issuers such as banks, AMCs, AIFs, and insurance companies with distributors including wealth advisors, PMS managers, and family offices through a single, integrated platform.

InvestValue Fintech focuses on enabling:

- Faster product discovery
- Streamlined execution
- Transparent comparisons
- Scalable partner growth
- Digital onboarding

Over the past few years, the platform has served a growing network of institutional partners and financial distributors, facilitating transactions across a wide range of investment products including mutual funds, structured products, AIFs, PMS strategies, insurance, and alternative investments.



The Company Emphasizes



Technology-Led
Distribution



Compliance-First
Processes



Data-Driven
Insights



Partner
Enablement



Financial Literacy &
Investor Awareness

Group Ecosystem

The InvestValue Group operates across three verticals:

InvestValue Capital Private Limited: SEBI-registered Portfolio Management Services

InvestValue Fintech Private Limited: Wealth-product technology marketplace (NeoFinDesk)

Invest4Edu Private Limited: SEBI-registered Research Analyst focused on education financial planning.

This integrated ecosystem allows us to combine investment expertise, technology, and education for better investor outcomes. The group's mission is to make high-quality financial products more accessible, transparent, and efficient for both investors and intermediaries across India.



Organisation & Management Structure

Core Management Team



Chintan Kotak, Co-Founder

A business and sales enthusiast with 20+ years of expertise in wealth management and capital markets. Known for building high performing teams, scaling businesses, and pioneering innovative strategies, he specialises in transforming ventures into profitable, high-growth enterprises.



Manish Sahijwani, Co-Founder

A versatile leader with 20+ years of expertise in wealth management and financial planning for UHNWIs, institutions, and family offices. His outstanding leadership abilities have been pivotal in steering teams and ensuring the division's profitability.



Manoj Sharma, Co-Founder

A finance industry veteran with 19 years of expertise in private equity, capital markets, mutual funds, and portfolio management. Passionate about product and sales, he brings deep wealth management proficiency to the tech platform.



Tushar Bopche, Co-Founder

A veteran finance expert with 19 years of leadership experience as a Product Head in leading financial firms. With a deep expertise in marketing, strategy and investment services he has been able to drive business growth through innovations. He is committed to create an ecosystem to bridge the gap between financial product offering through platform enabling sustainable success.



Investment Leadership



Aditya Agarwala, Co-Founder & CIO

Aditya Agarwala has over 17 years of experience in Indian equity markets across equity research, portfolio management, and investment strategy. He leads the investment process at InvestValue Capital, focusing on disciplined stock selection, portfolio construction, and risk management. His approach emphasises price trends, business quality, earnings sustainability, and long-term capital compounding. Aditya is also a SEBI-registered Research Analyst and actively contributes to investor education and market awareness.



Siddharth Purohit, Portfolio Manager - Equity

Siddharth Purohit is a seasoned investment professional with 20+ years of experience in equity investing, serving mutual funds, insurance, PMS, and institutional mandates. As a Fund Manager he partners with HNIs and Family Offices to build long-term wealth through a research-driven buy-and-hold philosophy.



Sunny Trisal, Portfolio Manager - Debt

Has over 19 years of experience in varied financial services like stock exchange, banking and broking. His expertise lies in product & business development in fixed income markets. Specialist in fixed-income instruments, credit analysis, and risk-controlled debt strategies.



Ritesh Jaiswal, Product Management

More than 10 years of experience in managing products in wealth management, banks & stock broking, responsible for defining the vision, strategy, and roadmap for wealth products, ensuring it meets customer needs and driving business growth.

Details of Our Product Offerings



Management Fee Structure

Particulars	Category 1		Category 3
Min Commitment	₹50 Lakhs	₹5 Cr	₹10 Cr
(On Daily AUM Value)	Fixed	2.50%	2.00%
	Hybrid*	1.50% Fixed, 15% Performance Fees above 10% Hurdle Rate	1.25% Fixed, 15% Performance Fees above 10% Hurdle Rate
Portfolio Manager	InvestValue Capital		
Strategy	Multicap Equity Portfolio		
Investment Objective	Generate capital appreciation through investments in equities with a long-term perspective.		
Investment Strategy	The strategy is long-only and seeks to optimize risk-reward by investing across large, mid, and small caps without sectoral or market-cap restrictions. A mix of bottom-up and top-down research is applied, with emphasis on balancing growth opportunities with risk control. Diversification is maintained to manage volatility, while stock selection is driven by fundamentals, growth visibility, and valuation attractiveness.		
Types Of Securities	<ul style="list-style-type: none"> • Listed equities and related instruments • Debt and related instruments (such as Liquid Mutual funds, ETFs, etc.) • Bank Fixed Deposits 		
Benchmark	BSE 500 TRI		
Risk	High		
Subscription	<ul style="list-style-type: none"> • An initial corpus consisting of securities and /or funds of an amount prescribed by the Portfolio Manager, subject to minimum amount as specified under SEBI regulations, as amended from time to time (Currently ₹ 50 Lakhs) • Ongoing - The client may on one or more occasion(s) or on a continual basis, make further placement of securities and / or funds under the portfolio, subject to discretion of the Portfolio Manager. 		
Exit Load	If redeemed in the first year from the date of investment, 2% of redemption amount. If redeemed in the second year from the date of investment, 1% of the redemption amount. If redeemed after a period of two years from the date of investment, no exit load.		
Operating Expenses	Operating expenses may include audit fees, custody charges, fund accounting, legal, and reporting costs, excluding brokerage and statutory levies		

*Performance fees, where applicable, shall be charged subject to a high-water mark principle.



General Risk Factors:

All products / investment approaches attract various kinds of risks. Please read the relevant Disclosure Document/ Client Agreement/ Offer Documents (includes Private Placement Memorandum and Contribution Agreement) carefully before investing

General Disclaimers:

- The information and opinions contained in this report/ presentation have been obtained from sources believed to be reliable, but no representation or warranty, express or implied, is made that such information is accurate or complete.
- Information and opinions contained in the report/ presentation are disseminated for the information of authorized recipients only and are not to be relied upon as advisory or authoritative or taken in substitution for the exercise of due diligence and judgement by any recipient.
- The information and opinions are not, and should not be construed as, an offer or solicitation to buy or sell any securities or make any investments.
- Nothing contained herein, including past performance, shall constitute any representation or warranty as to future performance.
- The client is solely responsible for consulting his/her/its own independent advisors as to the legal, tax, accounting and related matters concerning investments and nothing in this document or in any communication shall constitute such advice.
- The client is expected to understand the risk factors associated with investment & act on the information solely on his/her/its own risk. As a condition for providing this information, the client agrees that InvestValue Capital Pvt Ltd, its Group or affiliates makes no representation and shall have no liability in any way arising to them or any other entity for any loss or damage, direct or indirect, arising from the use of this information.
- This document and its contents are proprietary information of InvestValue Capital Pvt Ltd and may not be reproduced or otherwise disseminated in whole or in part without the written consent.
- The information and opinions contained in this document may contain “forward-looking statements”, which can be identified by the use of forward-looking terminology such as “may”, “will”, “seek”, “should”, “expect”, “anticipate”, “project”, “estimate”, “intend”, “continue” or “believe” or the negatives thereof or other variations thereon or comparable terminology. Due to various risks and uncertainties, including those set forth under the Disclosure Document/Offer Documents, actual events or results or the actual performance may differ materially from those reflected or contemplated in such forward-looking statements.

Regulatory Disclosures:

- All clients have an option to invest in the above products / investment approaches directly, without intermediation of persons engaged in distribution services.
- This document, its contents, especially the Performance related information, is not verified by SEBI or any regulator.
- Registration granted by SEBI does not in any way guarantee the performance of the Portfolio Manager or provide any assurance of returns to investors.

***This document is intended solely for information purposes and private circulation and shall not be construed as an advertisement, solicitation, or public offer.*



V invest value

For further details please reach out to

Ritesh Jaiswal

+91 84549 55660

✉ pmsconnect@investvalue.ai

🌐 www.investvaluecapital.com



Office Address

Mumbai

12th Floor, Gayatri Heights, Telli Galli,
opp. Hubtown Solaris, Andheri (E),
Mumbai, Maharashtra - 400069

Noida

A-1, Block A, Sector 3,
Near Sector-16 Metro Station,
Noida, Uttar Pradesh - 201301

Varanasi

4th Floor, Anant complex, Sigra Varanasi,
Uttar Pradesh, 221010

Gurugram

219-220, Vipul Agora Business
Center Sector-28, MG Road
Gurugram - 122001, NCR.

Kolkata

46B, Rafi Ahmed Kidwai Road,
Park Street, 5th Floor, Kolkata,
West Bengal - 700016

Pune

201/202, 2nd floor, Park Plaza,
Kashinath Shastri Abhyankar Rd,
opposite Kamala Nehru Park Road,
Erandwane, Pune, Maharashtra 411004

Hyderabad

Awfis Rajapushpa Summit
5th Floor, Nanakramguda Rd,
Financial District, Gachibowli,
Hyderabad, Telangana - 500008

Bangalore

99/3, AMBE TOWER G Block,
2nd floor Sahakar nagar, Bangalore
560092